

Some facts about New Hampshire Minerals and Mines.

- About 280 mineral species can be found in NH.
- Foggite and Whitmoreite are two NH minerals named after CMC club members.
- New Hampshire Mines and Mineral Localities by Phillip Morrill, @1960, lists over 750 mineral localities - reprints are available at the show.
- The last major geological event in NH was the surficial deposit caused by the Wisconsin-age ice sheet, which dissipated between 17,000 and 11,000 years ago.
- A complex pegmatite mine can yield over 100 mineral species. The Palermo mines and Ruggles mine are examples in New Hampshire.
- Charles T. Jackson was appointed the first New Hampshire state geologist, September 10, 1839.
- Beginning in the mid 1800s, NH became preeminent in mining of mica.



This crystal of Triphylite is only 4 cm tall, the pocket inside contains Beraunite, Laueite, Rockbridgeite, Strunzite and Whitmoreite crystals
Palermo #2 mine
Robert Whitmore collection Watercolor by Fredrick C. Wilda

CAPITAL MINERAL CLUB
C/O GORDON JACKSON
P. O. BOX 600
CANTERBURY, NH 03224

44th Annual

Gem, Mineral & Jewelry Festival

Find a unique gift
Discover a new hobby, learn more
Bring your unknown minerals for identification

SEPTEMBER 29 & 30, 2007
Always The Last Weekend In September
Everett Arena
Handicap Accessible
15 Loudon Road, Concord, NH 03301

Minerals - Crystals
Lapidary Supplies
Books - Magazines

Faceted Stones
Fossils - Jewelry
Gem Carving

Club Member Mineral and Gem Displays



Transparent Whitlockite crystals on
Siderite and Jahnsite crystals
Palermo #1 mine

Robert W. Whitmore collection
Watercolor by Fredrick C. Wilda

Presented by Capital Mineral Club
Concord, NH 03301
A NH non-profit educational organization

Make sure you sign up for the Door Prizes
At the Capital Mineral Club Show Table

What not to miss at the festival.



[Shields and Frances Flynn, a.k.a. Trafford-Flynn Minerals](#)

Trafford-Flynn Minerals are the longest running minerals dealers at the Capital Mineral Club mineral and gem show, with 39 consecutive years. Starting in 1968 Shields Flynn teamed up with John Marshall as "Marshall-Flynn" to sell minerals. Following that Shields and his wife Frances, whose maiden name is 'Trafford' formed Trafford-Flynn Minerals and were in the same corner at Mt. Sunapee ever since.

Shields started collecting minerals around the age of 8 in the mountains of Western North Carolina. The abundance of mineral species to be found in North Carolina, membership in the Southern Appalachian Mineral Society, and a mentor that owned many of the major feldspar mines in Spruce Pine, NC solidified a life time interest in minerals. Upon finishing high school Shields continued his studies at the University of North Carolina, Chapel Hill, and completed his Bachelor of Science in Geology in 1960. After a tour in the army, spending most of his time in Germany, he began a career in the computer industry. Although other issues, like meeting Frances and getting married and starting a new career in the exploding computer industry took up much of his time, he continued to be active in building a mineral collection. With Frances being from London and frequent trips to England with various companies, Shields had opportunities to build a collection of English minerals over the coming years. Although deeply involved in keeping up with a rapidly changing and evolving computer industry, Shields and Frances managed to always turn up at the Sunapee Show each year.

In 1997 Shields retired from the computer business and launched a more active mineral business, including the www.trafford-flynn.com web site and expanded mineral show schedule. In addition to the US shows the schedule also included a 10 year period of doing mineral shows in England at Oxford and Haywards Heath as well as the Munich show in Germany and Saint Marie aux Mines in France.

The last few years Shields and Frances have been focusing their collecting interests on minerals from Russia, China and Namibia, in addition to an extensive reference thumbnail collection. Many of these have been exhibited at numerous shows including the annual Capital Mineral Club show exhibition and a Chinese display at the 2005 Tucson Mineral Show.

Currently Shields is one of the principals and part of the committee that is organizing the exhibition of US minerals that will be the feature exhibition for the 2008 Tucson Show. In addition to approximately 40 cases featuring the best minerals from the most important mineral producing US localities, there will also be a top quality book with text and photographs, a DVD, and related lectures to document this important event.

Retail Dealers

| | | |
|------------------------------------------------------------|-----------------------------------------------------|---------------------------------------------------|
| Crystal Cache Minerals East Swanzey, NH | Ed & Joan's Dartmouth, MA | Stones By Vera Sudbury, MA |
| Ewing's Lapidary Nashua, NH | The Collectors Francestown, NH | Fowler's Wirewrapping Marlboro, NH |
| Green Mountain Minerals Middlesex, VT | Ledge Art Studio Rumney, NH | Hinshaw Rock'n Gems French Lick, IN |
| Rocko Minerals & Jewellery Margaretville, NY | Shades of Jade Washington, NH | Lithographie, LLC East Hampton, CT |
| Yankee Mineral & Gem Co. East Hampton, CT | Santerre's Stones & Stuff Fremont, NH | T.P. Minerals Milford, CT |
| Trafford - Flynn Norfolk, MA | Earth Echoes Crystals Canterbury, NH | Russell Geologies Barre, MA |
| Sierra Madre Mining Co. Fremont, NH | Fantasy in Gemstones Penacook, NH | Cardinal Minerals Shelton, CT |
| Alrob Minerals Canterbury, NH | The Museum Piece East East Boston, MA | Farallon Gems Goshen, NH |
| Well Arranged Molecules Florence, MA | Natures Finest Creations Hadley, MA | Precision Gem Cutting Raymond, NH |
| Malachite & Gems of Africa Rochester, NY | Toveco Speciman Mining Francestown, NH | Rock & Crystal Emporium Florida, MA |

Wholesale Dealers

Located at the East End of the Everett Arena
Proof of retail business required for entry to wholesale section.

Kenneth Huang - New York, NY

John Corbin & Sons - Salem, MA

Howard I. Schlansker - Marshfield, MA

Multi-Faceted Minerals - Wolfeboro, NH

Dealer Contact: Gordon Jackson Email: Gsj8544@aol.com

Phone: 603-783-4493

[Kevin Downey](#)

[Well Arranged Molecules](#)

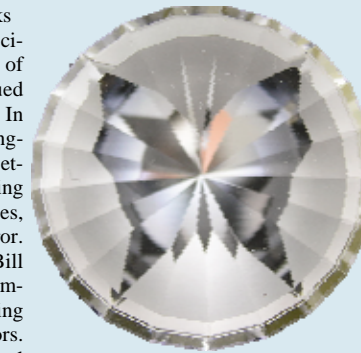
If you enjoy fine, esthetic crystallized minerals and especially if you have an interest in the exciting new discoveries in Chinese minerals, this is the right place! We travel extensively searching for fine minerals, unknown localities, and seek new, rare, exotic and "well-arranged" examples of the mineral kingdom. We will be adding frequent updates, minerals for sale, breaking news and try to provide accurate details regarding locations, analysis and other mineralogical topics. We welcome your comments, ideas and contributions! Our stock for sale is carefully selected, unconditionally guaranteed, and we feel represents exceptional value in terms of quality and price. As China has become a major source of the very best examples ever found for many species (and at reasonable prices for most collectors) we have made this fantastic source our specialty. We do also deal in and seek minerals from other world locales (especially South America). Please see us at the show with your needs, our current stock exceeds 2,000 pieces and only a small percentage is on our website or goes to shows. We take pride in finding great stuff for collectors who appreciate minerals with molecules (and atoms, unit cells etc.) that are well arranged!

Visit Kevin's website: www.wellarrangedmolecules.com for more information.

If you are interested in becoming a member of the Capital Mineral Club, visit the clubs website: www.capitalmineralclub.org and click the "Membership Application Form" link, or come by the Capital Mineral Club Table to fill one out.

[Bill Brown](#)
[Precision Gem Cutting](#)

62.65 Cts. Quartz
Butterfly Design



In 1965 Bill became interested in rocks and minerals while studying Earth Science in High School. Bill's endeavors of mineral collecting have continued through the years to the present day. In 1988 he met Paul Beaudette of Springvale, Maine who introduced Bill to faceting. Bill purchased a Facetron faceting machine and started cutting gemstones, self taught, learning by trial and error. After about 5 years of faceting, Bill found his ability to facet quality gemstones was apparent, so he started cutting gemstones for other mineral collectors. "Faceting gemstones for other mineral collectors has given me great satisfaction being able to transform their gem crystals or gem rough into beautiful brilliant gemstones." After sixteen years of faceting for himself and other mineral collectors, Bill decided to teach faceting classes for those interested in learning how gemstones are created.

Visit Bill's website: www.precisiongemcutting.com to learn more.

There will be Gem faceting and carving demonstrations held both Saturday and Sunday throughout the day. Please make sure to stop by the Capital Mineral Club Show Table located near the main entrance of the show.

The Annual Gem, Mineral & Jewelry Festival is presented by the Capital Mineral Club, Concord, NH.

The Club was formed on January 14, 1961, as a NH non-profit educational corporation and has had monthly meetings ever since. Our Club is dedicated to education in the earth sciences with special emphasis on preservation of minerals and mining. We annually support scholarships at local colleges and seek other opportunities to help the local schools. Club members are invited each summer on mineral collecting trips to local and distant mines. Visit our web site for meeting dates and a membership form.

"Help us support education and science"

SHOW INFORMATION

September 29 & 30, 2007

Saturday 9am - 5pm & Sunday 10am - 4pm

Admission \$4.00

Children 12 and under FREE with paying adult.

For more information and a listing of events visit:

www.capitalmineralclub.org/clubshow

Or contact the show chairman Gordon Jackson

Phone: 603-783-4493 Email: Gsj8544@aol.com

For more information about The Everett Arena visit:

[www.onconcord.com/GSADMIN/
concordv2.asp?siteindx=L0i,04](http://www.onconcord.com/GSADMIN/concordv2.asp?siteindx=L0i,04)

Fred C. Wilda of Natures Finest Creations will be selling his original watercolor paintings from "The Pegmatite Mines Known As Palermo" Book written by Robert W. Whitmore and Robert C. Lawrence Jr. These books will be available for sale at the show at the Capital Mineral Club Show Table.